



# Equitable and Innovative Funding Model EEF

Equitable Education Fund (Thailand)  
Dr.Krai Yos Patrawart  
Managing Director



## Background

1. Established under Equitable Education Fund Act – B.E. 2561 (2018) and announced to use on 14 May 2018



2. Reason for issuing: Section 54 paragraph six of the Constitution of the Kingdom of Thailand provides that a fund shall set up for the assistance of financially deprived persons to alleviate educational inequality and enhance the quality and efficiency of teachers.

3. Thailand's national Education Reform Committee suggested EEF be a new mechanism of equitable education.



<https://en.eef.or.th/>



## Unique features of Equitable Education Fund (EEF)



1. Equity-focused Public Fund with Tax Incentives for Private Donation
2. Independent Management under Prime Minister's Supervision and **Governing Board consists of officials from 5 Ministries (Education, Finance, Social Development, Human Security, Public Health, and Interior) and experts from various sectors (academic, private sector, and civil society)**
3. Multi-sectoral, Multi-disciplinary, and Area-based Approaches to Equity
4. Evidence-base and Research-based Policy Recommendations through the cabinet, parliamentary and public advocacy
5. Investing in scalable innovation with partners



### Data and research driven projects



### Partnerships







## What do we do?

### Vision

Children, Youths, and everyone who is underfinanced or disadvantaged can have access to quality education.

### Mission

Induce all sectors to propel and support educational opportunities in order to reduce inequity and improve teacher quality.

### Goals & Objectives



#### Learning Access

Encourage children and youths to have an access to quality education and prevent them from dropout, especially in compulsory education levels.



#### Alternative Education

Support youths and one who is outside the education system to have access to learning throughout their lives for self and professional development.



#### Learning Outcome

Encourage institutions, related stakeholders, communities, and public sectors to be able to support education management so that learners can receive quality learning outcomes and reduce inequality in education.



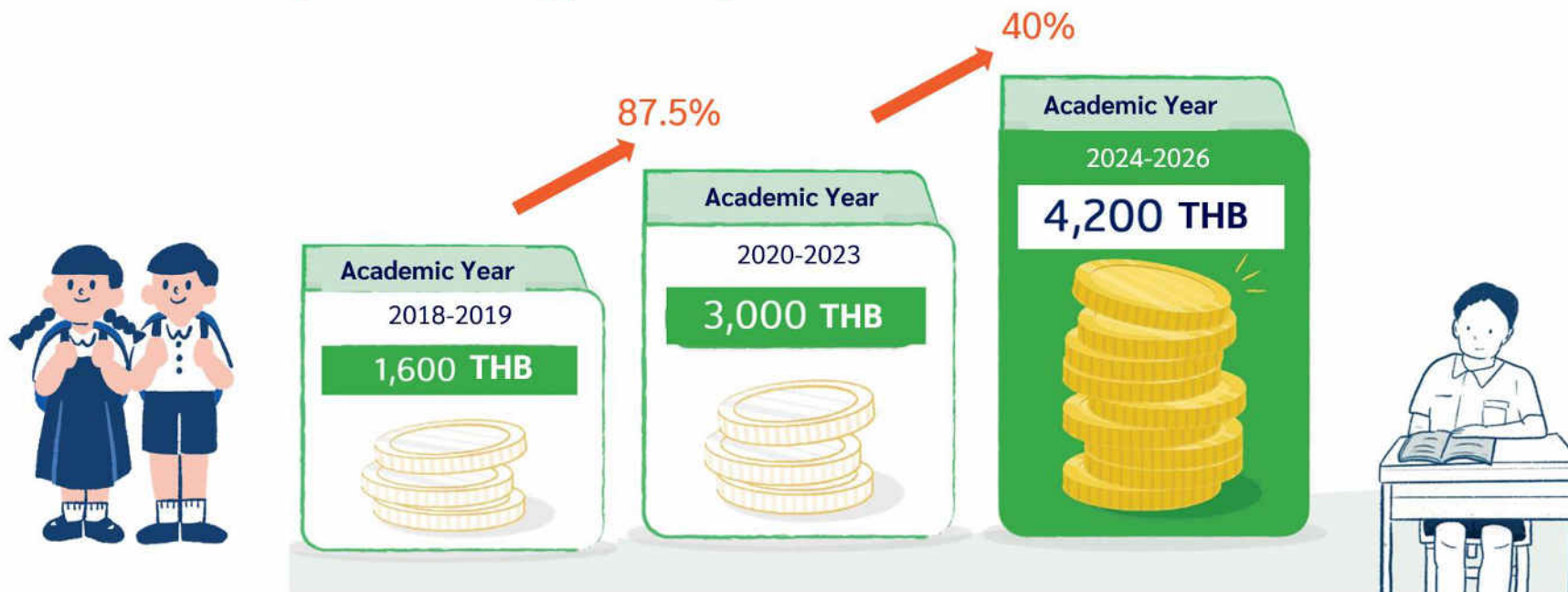
#### Systems Change

Create innovations, knowledge, and databases to be used to drive change at the policy level.  
Build network connectivity to address educational inequalities while mobilization resources.



## Using Data Poverty Screening from Teachers Across the Country

To Push and Adjust Financial Support for Equitable



On 14<sup>th</sup> March 2023 – The cabinet approved changing the financial support for all students in Education Security System



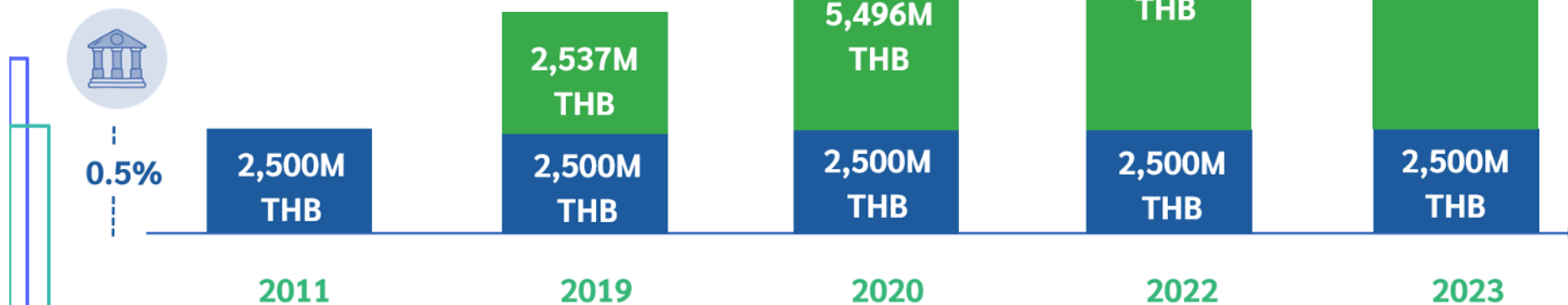


## An Overview of the Budget



1-1.5%

As of March 2023



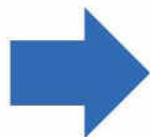




## Foundation of Equity-based Budgeting at EEF



If all are received equally, the disparity still occurs.



If an individual receives as needed, the equity will begin.



## Partnering with 6 Education Administrative Agencies to Connect Data/Works



Office of the Basic Education Commission (OBEC)



Department of Local Administration



Border Patrol Police



Office of the Private Education Commission (OPEC)



Bangkok Metropolitan Administration



National Office of Buddhism



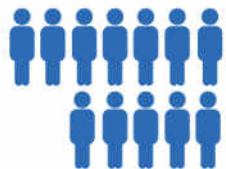
## EEF's Equity-based Budgeting Program

### The Education Security System

#### Objective

1. Provide conditional cash transfers (CCT) to students from extremely poor families (**The bottom 15% of the country**) to reduce obstacles and prevent them from dropping out of school.
2. Develop a conditional cash transfer (CCT) model for education institutions.
3. Develop measures to prevent dropouts

EEF has developed the **Information System for Equitable Education (iSEE)**, which is a large database that contains information on beneficiaries. It is linked to government databases in 6 ministries and a **geographic information system (GIS)** to help monitor the educational disparity situation and improve the quality of life of children and youths effectively.



**1.2M**

children and youths in school systems received CCT in Semester 1/2021

#### Call to Action TES

Education in Crisis Situation

**Addressing the Learning Crisis**

Transform the World

Digital Learning

Advancing Gender Equality

Financing Education



**1**

Provide conditional cash transfers to prevent dropout



**2**

Connect students, schools to relevant authorities (health, behavior, and education)



**3**

Mobilizing external funding for higher education opportunity



## Focus on Children and Youths in Bottom 15-20% Households

Academic Year 2022



No. of school-aged children





## Using EdTech and FinTech to help teachers collect data for Proxy Means Test (PMT)

1. Teacher visits student's home with Smartphone
2. Use CCT's Mobile application to collect:
  - Household data on income and asset ownership
  - Geographical location and photos of the household
3. Local administrators certify the accuracy of data by e-signing on CCT's App







## Poor students who proceed to higher education (based on CCT and TCAS data)

| Poverty screening (AY 2018) | Grade 9 students (AY 2018) | Found in OBEC database (AY 2021) | Accepted offer (TCAS 2022) | % of students who studied Grade 9 in AY 2018 |
|-----------------------------|----------------------------|----------------------------------|----------------------------|--|
| Poor                        | 106,137                    | 45,125                           | 15,051                     | 14%  |
| Extremely Poor              | 41,884                     | 16,917                           | 4,967                      | 12%  |
| Total                       | 148,021                    | 62,042                           | 20,018                     | 14%  |

TCAS = Thai University Central Admission System  
AY = Academic Year



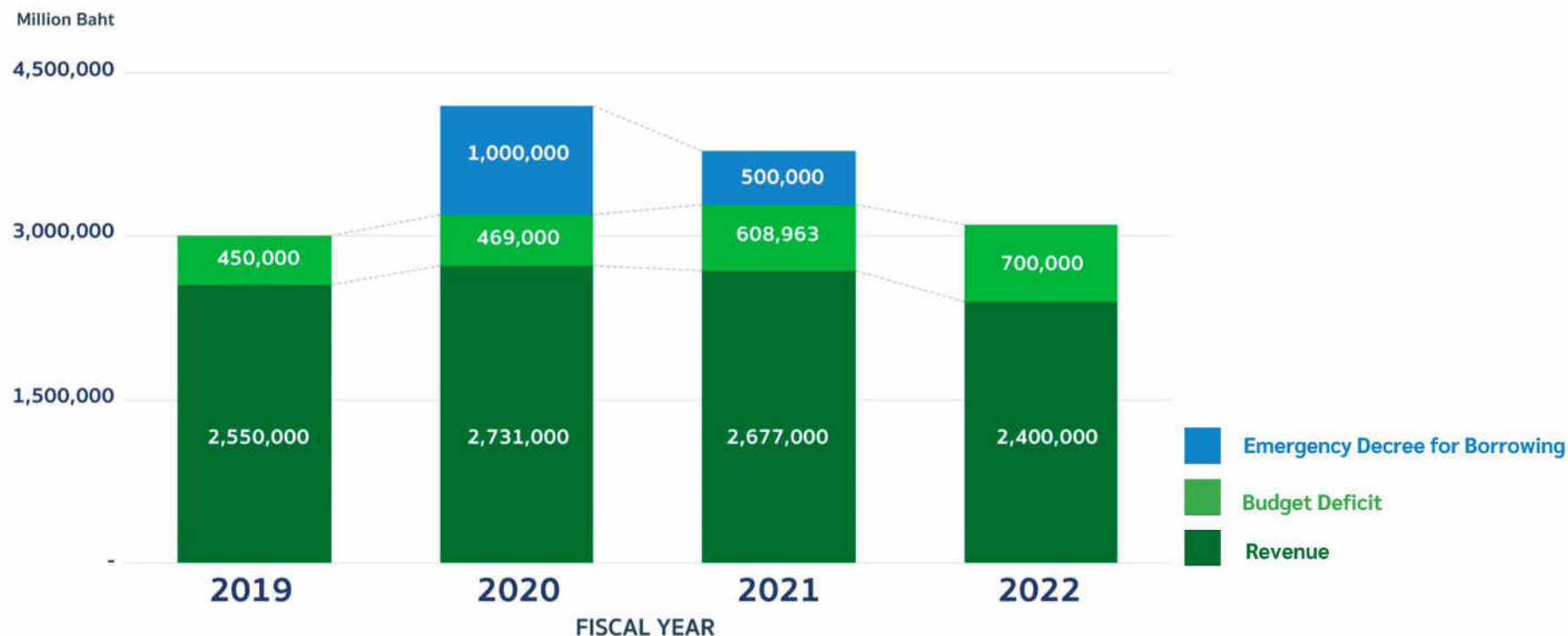


**COVID-19 adversely effected the populations' most disadvantaged seen from increase target population (Bottom 15)**



The screening results of extremely poor students in the first semester of 2021, beginning in September 2021.

### Limited fiscal space due to reduced government revenue and increased economic stimulus needs



Source: Budget Bureau





## Innovative Finance

### Zero Dropout - All Children Go to School

Corporate Bonds Worth **100** Million Thai Baht

The first time corporate bond with 2 benefits of investment.

Earn **3.20%** interest on investment per annum.

Help all children go to school

| Call to Action TES            |                                |
|-------------------------------|--------------------------------|
| Education in Crisis Situation | Addressing the Learning Crisis |
| Transform the World           | Digital Learning               |
| Advancing Gender Equality     | Financing Education            |

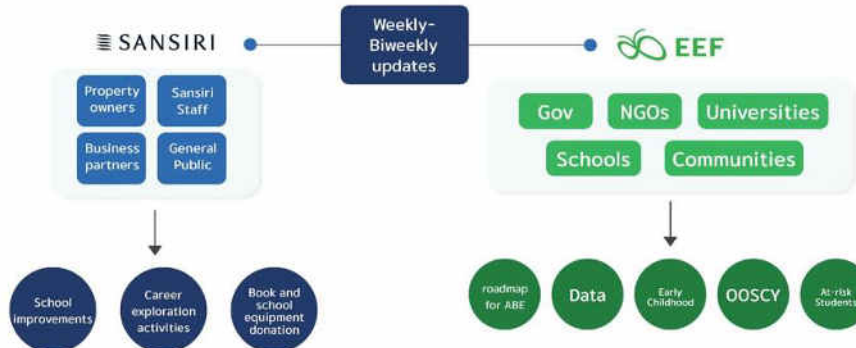
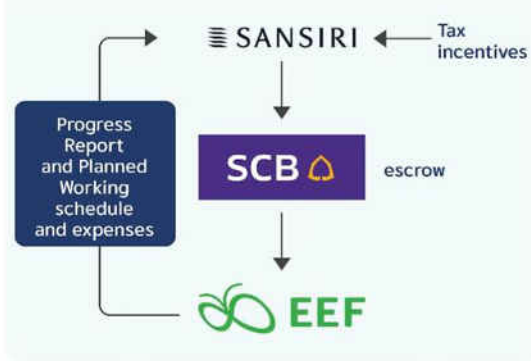


Seek Engagement opportunities and activities – e.g. school improvements, book donations, and career exploration activities.



Engage local partners to expand existing programs, expand new stakeholders, and new Target populations, drive synergies, and support local leadership to create sustainability of programs.

#### CORPORATE BOND FOR CSR



Innovative Finance

**Breath for Children Project**  
**PTT Virtual Run**



Pre-School – Grade 9 level who a risk of leaving the school system

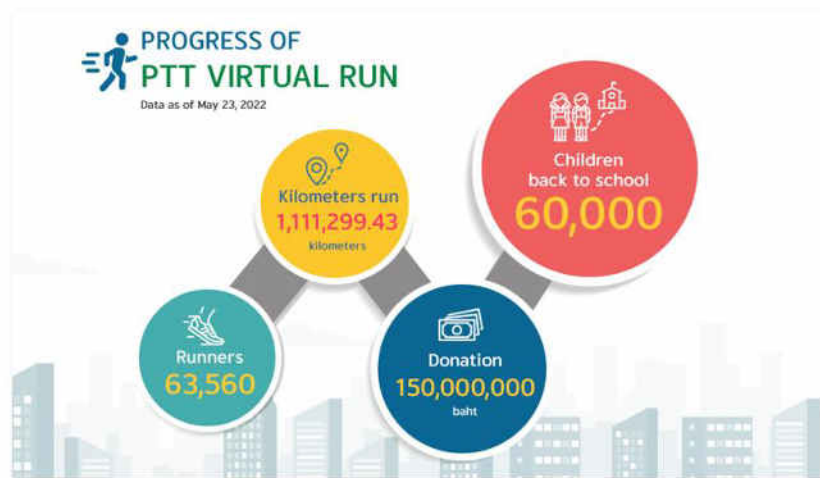


Accumulating  
Running – Walking Mileage

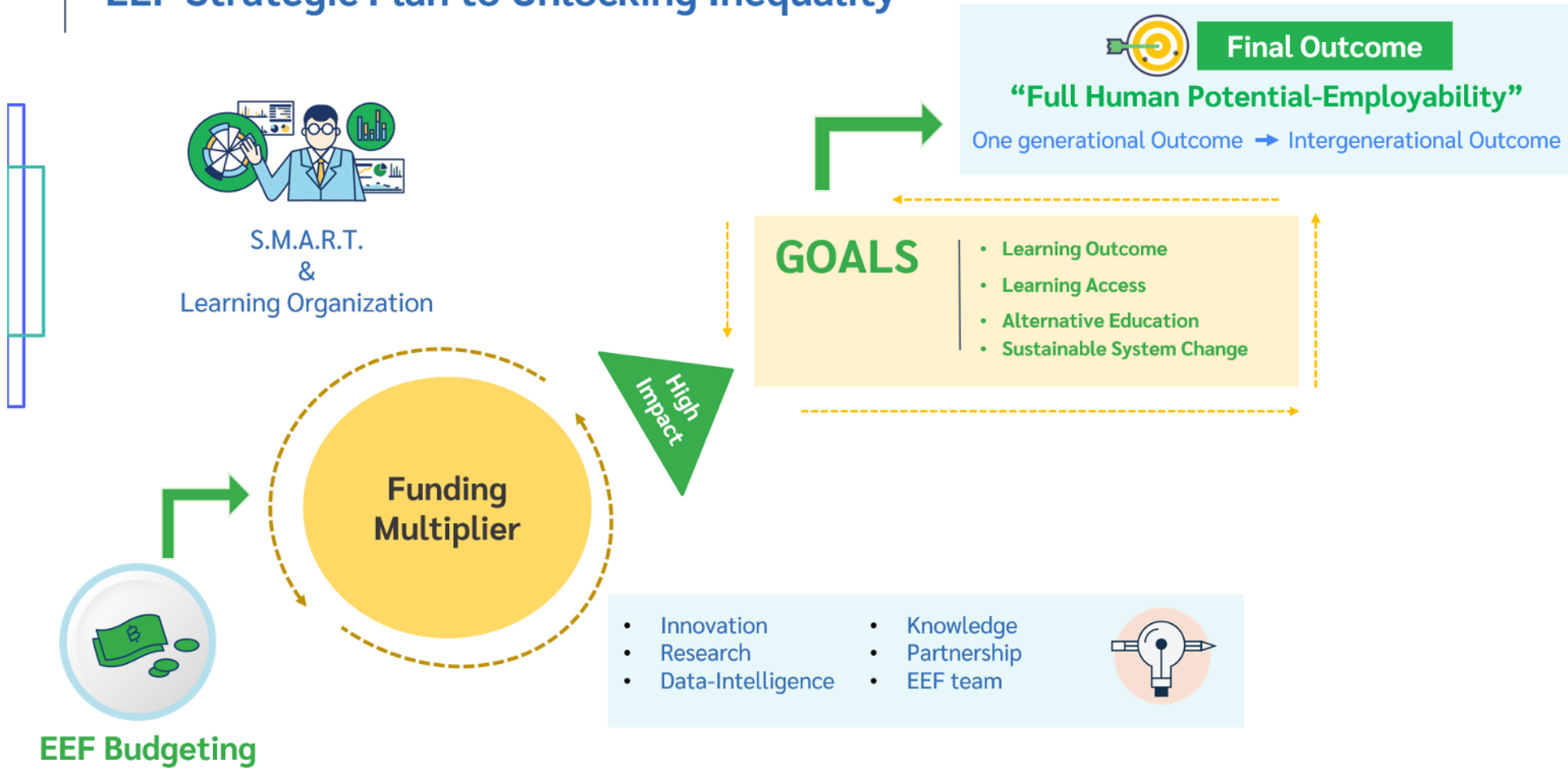


Scholarship

| Call to Action TES            |                                |
|-------------------------------|--------------------------------|
| Education in Crisis Situation | Addressing the Learning Crisis |
| Transform the World           | Digital Learning               |
| Advancing Gender Equality     | Financing Education            |



## EEF Strategic Plan to Unlocking Inequality







## Thank You for Your Attention

Dr. Kraiyos Patrawart  
Managing Director  
Equitable Education Fund (EEF) Thailand  
Email: [kraiyos@eef.or.th](mailto:kraiyos@eef.or.th)

